

## Transition to Standard Pathway

**PATHWAYS**

---

The Commission's New  
Accrediting Model



Higher Learning Commission  
A Commission of the North Central Association

**Multiple Pathways**

Greater Value to  
Institutions

**ACCREDITATION**

Greater Credibility  
to the Public

**Multiple Pathways**

Quality Assurance

**SINGLE SET OF  
CRITERIA**

Quality Improvement

**Guiding Values**

Reflect Guiding Values

Focus on student learning

A culture of continuous improvement

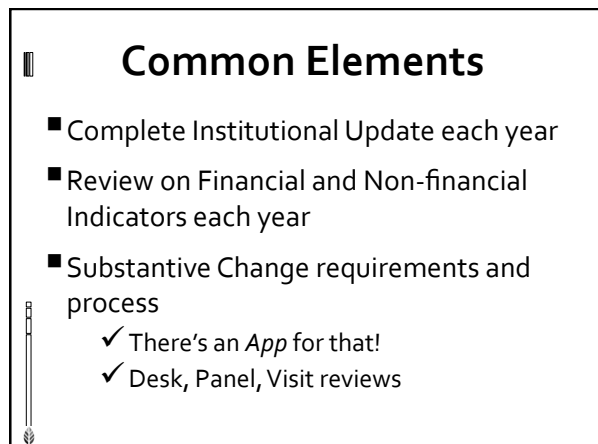
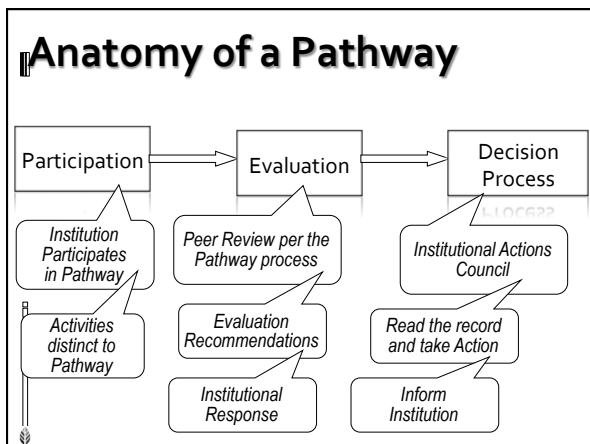
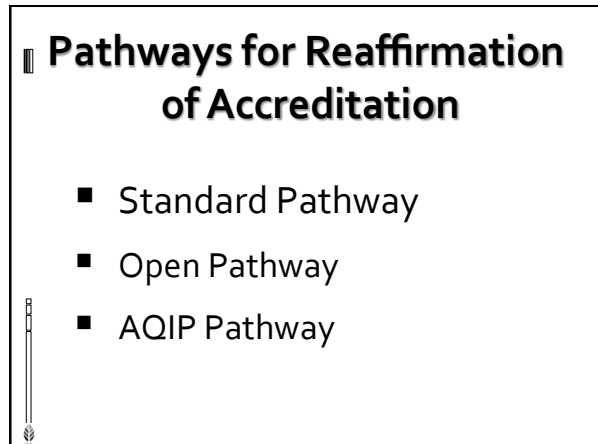
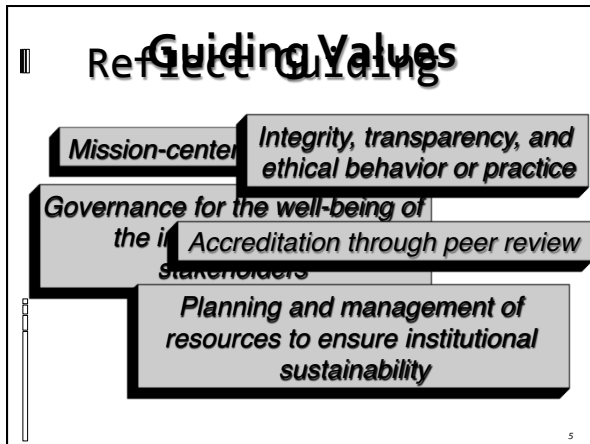
Education for a diverse, technologically connected world

Education as public purpose

Evidence-based institutional learning and self-presentation

4

## Transition to Standard Pathway



## Transition to Standard Pathway

### Common Elements

- Common elements to visits
  - ✓ Federal Compliance
  - ✓ Review of distance delivery
  - ✓ Review of extended operations (if applicable)
- Common policies
- Common Peer Corps

### Common Elements

- Common review by Criteria and Core Components
  - ✓ Met
    - Met without concerns
    - Met with concerns
  - ✓ Not Met

### Due Process & Decision

- Institution identifies errors-of-fact
- Team revises as appropriate
- Institution receives final team report
- Institution has opportunity to provide a response
- IAC reads the full record and takes action

## PATHWAYS

Transition Timeline and  
Implications for Institutions



## Transition to Standard Pathway

### Transition Timeline

- Institutions with PEAQ comprehensive visits before August 2015:
  - ✓ Remain in PEAQ, complete the visit, and transition to pathways after the decision process
  - ✓ Pathway determined between Commission and Institution
  - ✓ Begin at year one in Standard, Open, or AQIP Pathway

### Transition Timeline

- All other accredited institutions:
  - ✓ Spring – Summer 2012: Institutions receive letter and information on transition to and choice of pathways
  - ✓ Pathway determined between Commission and Institution
  - ✓ Transition 9/1/12 to appropriate point in pathway (see charts at end of booklets)

### Transition Options

- Institutions remaining in AQIP continue on the Pathway
- Institutions choosing AQIP should become knowledgeable on process and timelines for transition (no need to wait; AQIP in place now)
- Institutions may move from AQIP to Open based on next reaffirmation:
  - ✓ Wait if within year of Quality Checkup
  - ✓ Transition into Year 5, 6, or 7 of Open

### Transition Options

- Institutions choosing the Open Pathway transition according to next reaffirmation
- Institutions may choose Standard Pathway; and transition according to next reaffirmation
- Institutions not eligible for the Open or AQIP Pathways follow the Standard Pathway (*non-affiliated institutions are in Eligibility and Candidacy processes*)

## Transition to Standard Pathway

### Transition Timeline

- January 2013: Revised Criteria effective (Pathways rolls out with new Criteria)
- Fall 2013: Assurance System available to Open and Standard Pathway institutions
- Summer 2015: PEAQ ends, all institutions transitioned

### Transition Notes

- No institution (other than Pioneers) has Comprehensive or Assurance Review until 2014-15 (a few in Standard) or 2015-16 (Open)
- Samples of Open and Standard Pathway materials available in 2012; Assurance System available for testing now

### Standard Pathway (pg. 11)

	Year 1	Year 2	Year 3	Year 4	Year 5	Year 6	Year 7	Year 8	Year 9	Year 10
<b>Institutional Activities</b>	Submit interim reports and undergo visits if and as required			Assurance Filing (Assurance Argument and Evidence File); Federal Compliance Requirements			Submit interim reports and undergo visits if and as required			Assurance Filing (Assurance Argument and Evidence File); Federal Compliance Requirements
<b>Peer Review</b>	Review interim reports and conduct visits if and as required			Assurance Review and Comprehensive Evaluation (with visit)			Review interim reports and conduct visits if and as required			Assurance Review and Comprehensive Evaluation (with visit)
<b>Commission Decision Making</b>	Action on interim reports and visits if and as required			Action on Comprehensive Evaluation <sup>1</sup>			Action on interim reports and visits if and as required			Action on Comprehensive Evaluation and on Reaffirmation <sup>1</sup>

### Standard Pathway Transition (p. 12)

Next PEAQ Reaffirmation Visit Scheduled	PEAQ Visit Actually Takes Place	Year the Institution Transitions to the Standard Pathway	Place on Standard Pathway Cycle at Transition	Refer to Transition Map
2011-12**	2011-12	2012-13	Year 1	Map K
2012-13**	2012-13	2013-14	Year 1	Map L
2013-14**	2013-14	2014-15	Year 1	Map M
2014-15**	2014-15	2015-16	Year 1	Map N
2015-16	n/a	2012-13	Year 7	Map O
2016-17	n/a	2012-13	Year 6	Map P
2017-18	n/a	2012-13	Year 5	Map Q
2018-19***	n/a	2012-13	Year 4	Map R
2019-20***	n/a	2012-13	Year 3	Map S
2020-21***	n/a	2012-13	Year 2	Map T

See individual maps by reaffirmation year.  
Applies only to Standard Pathway

## Transition to Standard Pathway

Standard Pathway Transition: 2012-13										
Transition Map L: For institutions with the next PEAQ reaffirmation visit in 2012-13										
Pathway eligibility will be determined at the conclusion of the PEAQ review in 2012-13. The chart applies to those institutions that will follow the Standard Pathway either by placement or by choice.										
Year	2012-13	2013-14	2014-15	2015-16	2016-17	2017-18	2018-19	2019-20	2020-21	2021-22
PEAQ Visit	PEAQ Visit									
Pathway Cycle	Year 1	Year 2	Year 3	Year 4	Year 5	Year 6	Year 7	Year 8	Year 9	Year 10
<b>Institutional Activities</b>	Submit interim reports and undergo visits if and as required			Assurance Filing (Assurance Argument and Evidence File), Federal Compliance Requirements			Submit interim reports and undergo visits if and as required			Assurance Filing (Assurance Argument and Evidence File), Federal Compliance Requirements
<b>Peer Review</b>	Review interim reports and conduct visits if and as required			Assurance Review and Comprehensive Evaluation (with visit)			Review interim reports and conduct visits if and as required			Assurance Review and Comprehensive Evaluation (with visit)
<b>Commission Decision-Making</b>	Action on interim reports and visits if and as required			Action on Comprehensive Evaluation <sup>1</sup>			Action on interim reports and visits if and as required			Action on Comprehensive Evaluation and Reaffirmation of Accreditation <sup>2</sup>
<b>New Criteria<sup>3</sup></b>	Effective 1/1/12 <sup>4</sup>									
<b>Other Monitoring</b>	The Commission will continue to review data submitted by affiliated institutions through the Institutional Update, will apply change processes as appropriate to planned institutional developments, and will monitor institutions through reports, visits, and other means as it deems appropriate.									

(p. 14, applies only to Standard Pathway)

Standard Pathway Transition: 2015-16										
Transition Map O: For institutions with the next PEAQ reaffirmation visit in 2015-16										
Pathway eligibility will be determined at the conclusion of the PEAQ review in 2015-16. The chart applies to those institutions that will follow the Standard Pathway either by placement or by choice.										
Year	2012-13	2013-14	2014-15	2015-16	2016-17	2017-18	2018-19	2019-20	2020-21	2021-22
PEAQ Visit										
Pathway Cycle	Year 7	Year 8	Year 9	Year 10	Year 1	Year 2	Year 3	Year 4	Year 5	Year 6
<b>Institutional Activities</b>	Submit interim reports and undergo visits if and as required			Assurance Filing (Assurance Argument and Evidence File), Federal Compliance Requirements	Submit interim reports and undergo visits if and as required			Assurance Filing (Assurance Argument and Evidence File), Federal Compliance Requirements	Submit interim reports and undergo visits if and as required	
<b>Peer Review</b>	Review interim reports and conduct visits if and as required			Assurance Review and Comprehensive Evaluation (with visit)	Review interim reports and conduct visits if and as required			Assurance Review and Comprehensive Evaluation (with visit)	Review interim reports and conduct visit if and as required	
<b>Commission Decision-Making</b>	Action on interim reports and visits if and as required			Action on Comprehensive Evaluation <sup>1</sup>	Action on interim reports and visits if and as required			Action on Comprehensive Evaluation and Reaffirmation of Accreditation <sup>2</sup>	Action on interim reports and visits if and as required	
<b>New Criteria<sup>3</sup></b>	Effective 1/1/12 <sup>4</sup>									
<b>Other Monitoring</b>	The Commission will continue to review data submitted by affiliated institutions through the Institutional Update, will apply change processes as appropriate to planned institutional developments, and will monitor institutions through reports, visits, and other means as it deems appropriate.									

(p. 17, applies only to Standard Pathway)

Standard Pathway Transition: 2016-17										
Transition Map P: For institutions with the next PEAQ reaffirmation visit in 2016-17										
Pathway eligibility will be determined at the conclusion of the PEAQ review in 2016-17. The chart applies to those institutions that will follow the Standard Pathway either by placement or by choice.										
Year	2012-13	2013-14	2014-15	2015-16	2016-17	2017-18	2018-19	2019-20	2020-21	2021-22
PEAQ Visit										
Pathway Cycle	Year 6	Year 7	Year 8	Year 9	Year 10	Year 1	Year 2	Year 3	Year 4	Year 5
<b>Institutional Activities</b>	Submit interim reports and undergo visits if and as required			Assurance Filing (Assurance Argument and Evidence File), Federal Compliance Requirements		Submit interim reports and undergo visits if and as required		Assurance Filing (Assurance Argument and Evidence File), Federal Compliance Requirements		Submit interim reports and undergo visits if and as required
<b>Peer Review</b>	Review interim reports and conduct visits if and as required			Assurance Review and Comprehensive Evaluation (with visit)		Review interim reports and conduct visits if and as required		Assurance Review and Comprehensive Evaluation (with visit)		Review interim reports and conduct visit if and as required
<b>Commission Decision-Making</b>	Action on interim reports and visits if and as required			Action on Comprehensive Evaluation <sup>1</sup>		Action on interim reports and visits if and as required		Action on Comprehensive Evaluation and Reaffirmation of Accreditation <sup>2</sup>		Action on interim reports and visits if and as required
<b>New Criteria<sup>3</sup></b>	Effective 1/1/12 <sup>4</sup>									
<b>Other Monitoring</b>	The Commission will continue to review data submitted by affiliated institutions through the Institutional Update, will apply change processes as appropriate to planned institutional developments, and will monitor institutions through reports, visits, and other means as it deems appropriate.									

(p. 18, applies only to Standard Pathway)

Modification to the cycle										
<ul style="list-style-type: none"> <li>All institutions have at least two years to prepare for a comprehensive evaluation</li> <li>Modified schedule in place only during transition years</li> <li>Review at Year 6 (instead of Year 4) when reaffirmation is scheduled for 2018-19, 2019-20, 2020-21</li> </ul>										

## Transition to Standard Pathway

### What can you do now?

- Figure out where you are on timeline and transition calendar
- Complete currently required monitoring (reports or visits)
- Review the revised criteria